

# Flexible Couplings

## Drain Coupling



Flexseal Drain Couplings are used to connect, repair and maintain drainage systems and other small diameter non-pressure pipelines. Available to suit any pipe material up to 275mm outside diameter, Drain Couplings are designed for use in drainage systems where the resistance to earth loads (usually provided by a Standard Coupling) is not required.

Flexseal Drain Couplings comprise a moulded EPDM sleeve which is attached using Grade 1.4301 (304) wormdrive stainless steel clamping bands at either end.

Flexseal can also supply the product with nitrile sleeves for use with effluent which may be contaminated with hydrocarbons. Couplings are also available with Grade 1.4401 (316) stainless steel for improved corrosion protection. Like all unshielded couplings, Flexseal Drain Couplings do not meet with WIS-4-41-01 specifications. For WIS-4-41-01 applications a Flexseal Standard Coupling (SC) should be used.

### Benefits

- Low cost solution to damaged drainage systems
- Easy to install
- Efficient, airtight and watertight connection

### Applications

- Can be used to connect plain ended pipes
- Repair of existing pipe systems by replacing short sections of pipe
- Connects short and cut lengths of pipe
- An inexpensive option when a shielded coupling is not required

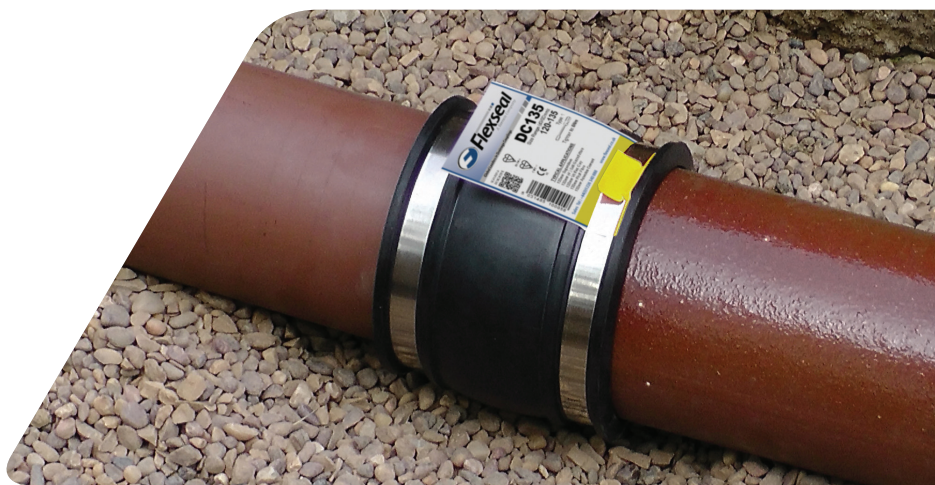
Global leaders in flexible couplings,  
drainage & plumbing systems



Product specification for DC125	
Product Code	DC125
Description	Flexseal Drain Coupling
Size Range	110-125mm
Material	EPDM Rubber / Nitrile Rubber
Steel	1.4301 (304) Stainless Steel or 1.4401 (316) Stainless Steel
Pressure Rating	0.6bar, 8.70psi
Temperature Range	-50°C to 150°C
Tightening Torque	6Nm
Standards	EN295-4, EN681-1

## Common Applications

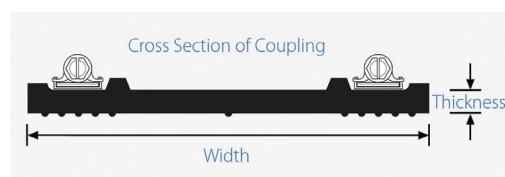
DC65	<ul style="list-style-type: none"> <li>50mm (2") POLYPROPYLENE</li> <li>50mm (2") ABS</li> <li>50mm (2") CAST IRON (SOIL)</li> </ul>
DC95	<ul style="list-style-type: none"> <li>82mm (3") PVCu</li> <li>75mm CAST IRON (SOIL &amp; DRAIN) (SMU)</li> <li>75mm DUCTILE IRON</li> <li>75mm GREY IRON</li> </ul>
DC115	<ul style="list-style-type: none"> <li>110mm PVCu</li> <li>100mm CAST IRON (SOIL) (SMU/ENSGN/SML)</li> <li>100mm STAINLESS STEEL</li> <li>100mm CORRUGATED PLASTIC</li> <li>110mm CORRUGATED PLASTIC</li> </ul>
DC125	<ul style="list-style-type: none"> <li>100mm SUPERSLEVE</li> <li>100mm CAST IRON (DRAIN)</li> <li>100mm DUCTILE IRON</li> <li>100mm GREY IRON</li> <li>100mm ASBESTOS CEMENT</li> <li>100mm PITCH FIBRE</li> <li>100mm TWINWALL PLASTIC</li> </ul>
DC135	<ul style="list-style-type: none"> <li>100mm SUPERSLEVE</li> <li>100mm (4") SALT GLAZED WARE</li> <li>100mm VITRIFIED CLAY</li> <li>100mm PITCH FIBRE</li> <li>100mm ASBESTOS CEMENT</li> </ul>
DC150	<ul style="list-style-type: none"> <li>125mm CAST IRON (SOIL)</li> <li>125mm TWINWALL PLASTIC</li> </ul>
DC165	<ul style="list-style-type: none"> <li>160mm PVCu</li> <li>150mm CAST IRON (SMU/ENSGN/SML)</li> <li>150mm STAINLESS STEEL</li> <li>160mm POLYETHYLENE</li> </ul>
DC175	<ul style="list-style-type: none"> <li>150mm ULTRA-RIB</li> <li>150mm QUANTUM</li> <li>150mm DUCTILE IRON</li> <li>150mm GREY IRON</li> <li>150mm TWINWALL PLASTIC (WAVIN/NORFLEX)</li> <li>150mm CORRUGATED PLASTIC (WAVIN/AQUAPIPE)</li> </ul>
DC185	<ul style="list-style-type: none"> <li>150mm SUPERSLEVE</li> <li>150mm PITCH FIBRE</li> <li>150mm ASBESTOS CEMENT</li> <li>150mm TWINWALL PLASTIC (B&amp;H/LINFLEX/AQUAPIPE)</li> <li>150mm CORRUGATED PLASTIC (B&amp;H)</li> </ul>
DC195	<ul style="list-style-type: none"> <li>150mm SUPERSLEVE</li> <li>150mm (6") SALT GLAZED WARE</li> <li>150mm VITRIFIED CLAY</li> <li>150mm CONCRETE</li> <li>150mm ASBESTOS CEMENT</li> <li>150mm PITCH FIBRE</li> </ul>



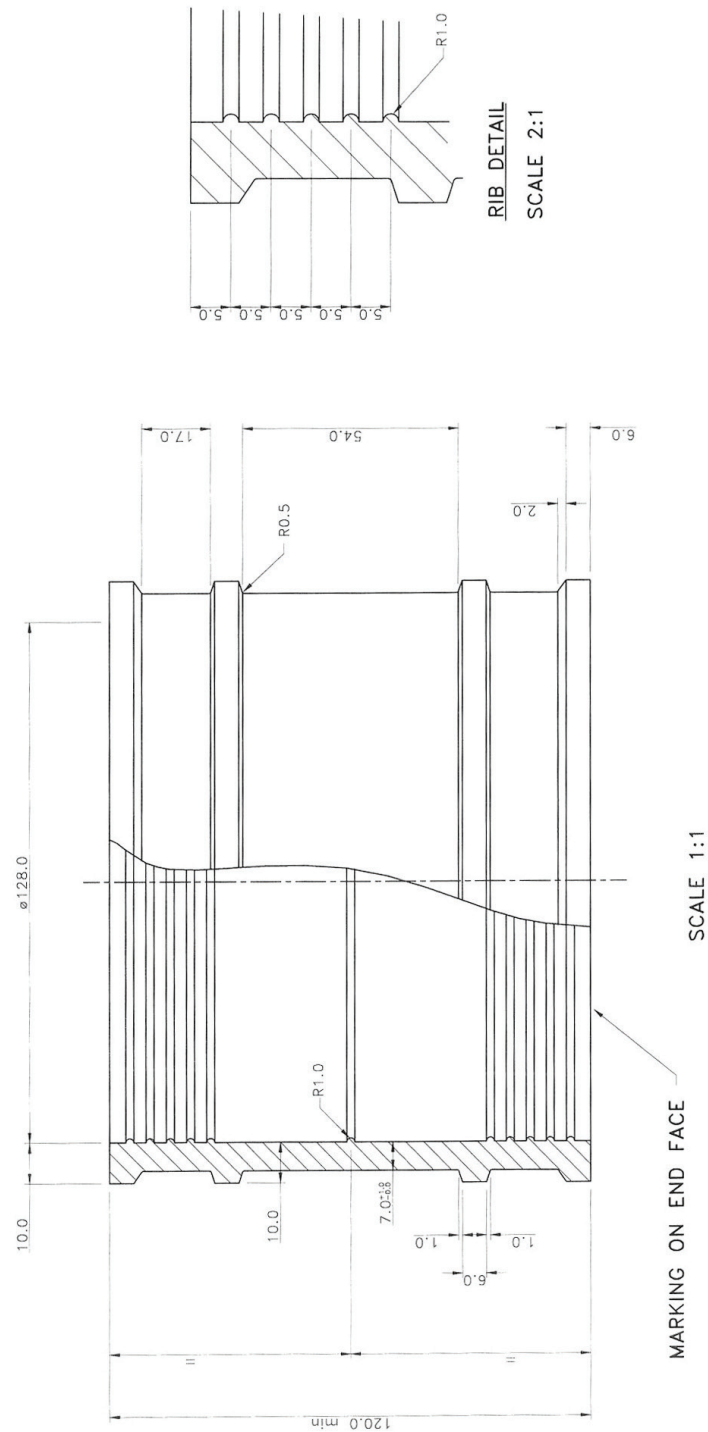
## Product Range

Reference No.	Size (mm)	Width (mm)	Thickness (mm)
DC 50	40 - 50	90	7
DC 65	50 - 65	90	7
DC 75	60 - 75	108	7
DC 95	80 - 95	110	7
DC115	100 - 115	100	7
DC125	110 - 125	120	7
DC135	120 - 135	120	7
DC150	135 - 150	120	7
DC165	150 - 165	120	7
DC175	160 - 175	120	7
DC185	170 - 185	120	7
DC195	180 - 195	120	7
DC215	200 - 215	150	7
DC225	210 - 225	150	7
DC250	235 - 250	150	7
DC275	260 - 275	150	7

**Note:** Also available in nitrile rubber



Global leaders in flexible couplings,  
drainage & plumbing systems



V002JUL16